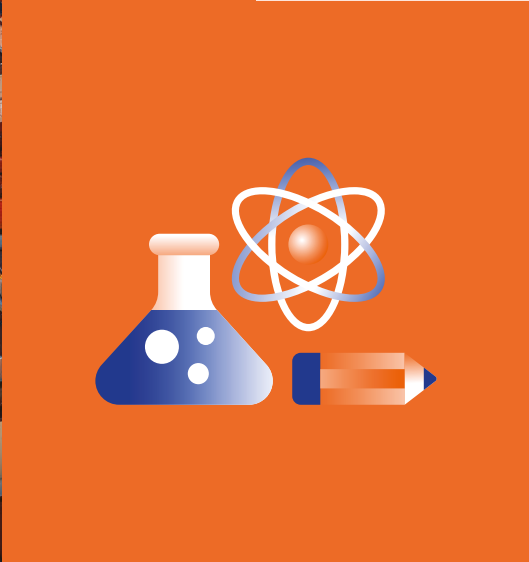




**International
Relations
Office**



STUDY



LEARN

**2026-2027
SABANCI
UNIVERSITY
Exchange Information Sheet**



Sabancı Üniversitesi

INSTITUTION	
University Name	SABANCI UNIVERSITY
Address	Orta Mahalle, Üniversite Cad.Tuzla, 34956, Istanbul, TÜRKİYE
Website Address of the University	http://www.sabanciuniv.edu/en
International Relations Website	https://iro.sabanciuniv.edu/en
Rankings	https://www.sabanciuniv.edu/en/university-rankings
Programs	Faculty of Arts and Social Sciences: http://fass.sabanciuniv.edu/en Faculty of Engineering and Natural Sciences: https://fens.sabanciuniv.edu/en Sabancı Business School http://sbs.sabanciuniv.edu/en
Erasmus Code	TRISTANBU20
CONTACT	
International Relations Office (IRO) (Agreements/Partnerships)	iro-partners@sabanciuniv.edu Evrım GÜNGÖR Devecioğlu
Contact E-mail: Incoming Students/Online Learning Agreement (OLA)	suincoming@sabanciuniv.edu Gözde Doğmuş
Contact E-mail: Outgoing Students	suoutgoing@sabanciuniv.edu Gülin Karahüseyinoğlu, Zeynep Ezgi Erdem
IRO Office Telephone:	+90 216 483 9100
Postal Address	International Relations Office, Orta Mahalle, Üniversite Cad.Tuzla, 34956, Istanbul, TÜRKİYE



ACADEMIC CALENDAR AND IMPORTANT DATES

Terms dates for the academic year	https://www.sabanciuniv.edu/en/academic-calendar									
Important Dates for Exchange	https://iro.sabanciuniv.edu/en/important-dates-incoming-exchange-students									
Nomination and Application Deadlines	<table border="0"> <tr> <td></td> <td>Nomination Deadline</td> <td>Application Deadline</td> </tr> <tr> <td>Fall</td> <td>May 15th</td> <td>May 31st</td> </tr> <tr> <td>Spring</td> <td>October 15h</td> <td>October 31st</td> </tr> </table>		Nomination Deadline	Application Deadline	Fall	May 15th	May 31st	Spring	October 15h	October 31st
	Nomination Deadline	Application Deadline								
Fall	May 15th	May 31st								
Spring	October 15h	October 31st								
Language Requirements and Language of Instruction	<ul style="list-style-type: none"> • At Sabancı University the language of instruction is English. • You need to have a very good knowledge of the English language. You will be asked to prepare assignments and presentations in English as well as to write final examinations in this language. We do not ask for any certificate but all exchange students are expected to have a high-level proficiency in English [i.e. TOEFL (PBT) 550, TOEFL (IBT) 80, CEFR B2] 									
Nomination Procedure	The partner institution should fill out SU Nomination form successfully and if any problem is occurred, please email to suincoming@sabanciuniv.edu .									
Application Procedure	<p>Application: Once their nomination has been approved, the nominee will be informed about the online application process.</p> <p>Required documents</p> <ul style="list-style-type: none"> • Transcript of Records • A portrait photo/passport sized (colour) • Passport Number 									
Period of Exchange	Fall or Spring Semester									

PRE-DEPARTURE INFO

Accommodation	<p>On campus dormitories are available. Priority to exchange students on campus dormitory placement.</p> <p>https://dorm.sabanciuniv.edu/en</p>
Visa Requirements	https://iro.sabanciuniv.edu/en/exchange-students-guide
Medical Coverage	<p>All exchange students should possess current and up to date medical insurance before arrival. International students with a private medical insurance need to confirm that their insurance covers the contingency of contagion in the event of a pandemic and the expenses that may occur during their stay in Türkiye. All newcomer students are required to complete Medical Information Form during the university enrollment process and all required blood tests and reports will be asked by Sabancı University Health Center. For medical information form related questions: healthcenter@sabanciuniv.edu</p>
Distance from City / Airport	<p>İstanbul Airport-Sabancı University: 85 km</p> <p>Sabiha Gökçen Airport-Sabancı University: 15 km</p>
Living / Prospective costs	The average monthly expenses are estimated as 700-900 Euro per month including room, board and other general expenditures.
Life in İstanbul	https://iro.sabanciuniv.edu/en/incoming-exchange-students-life-in-istanbul
Türkiye	https://www.goturkiye.com/

ARRIVAL AND ORIENTATION	
Travelling to Campus	https://iro.sabanciuniv.edu/en/how-get-campus
Orientation	Every year the week before the start of classes is the international student orientation week, for graduates, undergraduates and exchange students. The orientation schedule will be shared with all admitted students after the university admission period is complete.
Recommended Arrival Date	1 day before the orientation week (MBA students might start courses one week earlier than orientation, in Fall semester)
Turkish Language Course	Basic Turkish course are offered by School of Languages during the semester and the student gains ECTS.
ACADEMIC	
Academic Calendar	https://www.sabanciuniv.edu/en/academic-calendar
Recommended Arrival Date	1 day before the orientation week (MBA students might start courses one week earlier than orientation, in Fall semester)
Courses	https://iro.sabanciuniv.edu/en/incoming-exchange-students-course-offerings
Language of Instruction	English
Grading Scale	https://iro.sabanciuniv.edu/en/incoming-exchange-students-course-offerings
Maximum Workload per Semester	18 SU Credit/ about 36 ECTS
Recommended Credit Load per semester	30 ECTS, 15 SU Credit (MBA students should take min. 9 ECTS/4.5 SU Credits out of 30 ECTS/15 SU Credits)
Contact Hours per Course	3hrs/week
Course Limitations	https://iro.sabanciuniv.edu/en/incoming-exchange-students-course-offerings “Course Limitations”and Specific Course Limitations: https://iro.sabanciuniv.edu/sites/iro.sabanciuniv.edu/files/exchange_course_limitations_o.docx
Can students take courses from different departments?	Yes (The majority of the courses should be taken from the agreement subject area) Course limitations for specific subjects: https://iro.sabanciuniv.edu/en/incoming-students
Length of Programs	4 years (Bachelor degree) 2 years (Master degree)
Transcript of Records	It will be issued via Student Resources Office and will be shared via email within 5 weeks after the final exam period ended.

Sabancı Üniversitesi

STUDENT SUPPORT SERVICES

Why Sabancı University? Why Istanbul?	https://iro.sabanciuniv.edu/en/incoming-students
Buddy Program	Students will be assigned to a buddy student. They are full time student at Sabancı University with experience regarding the issues an exchange may face during their stay and studies.
Special Needs	https://iro.sabanciuniv.edu/en/student-special-needs https://ciad.sabanciuniv.edu/en/student-special-needs-support-unit-ssn
Center for Individual and Academic Development (CIAD)	https://ciad.sabanciuniv.edu/en
Student Clubs	https://clubs.sabanciuniv.edu/en More than 75 active students clubs
Campus Life	https://iro.sabanciuniv.edu/en/campus-life
Career Services	https://career.sabanciuniv.edu/en

